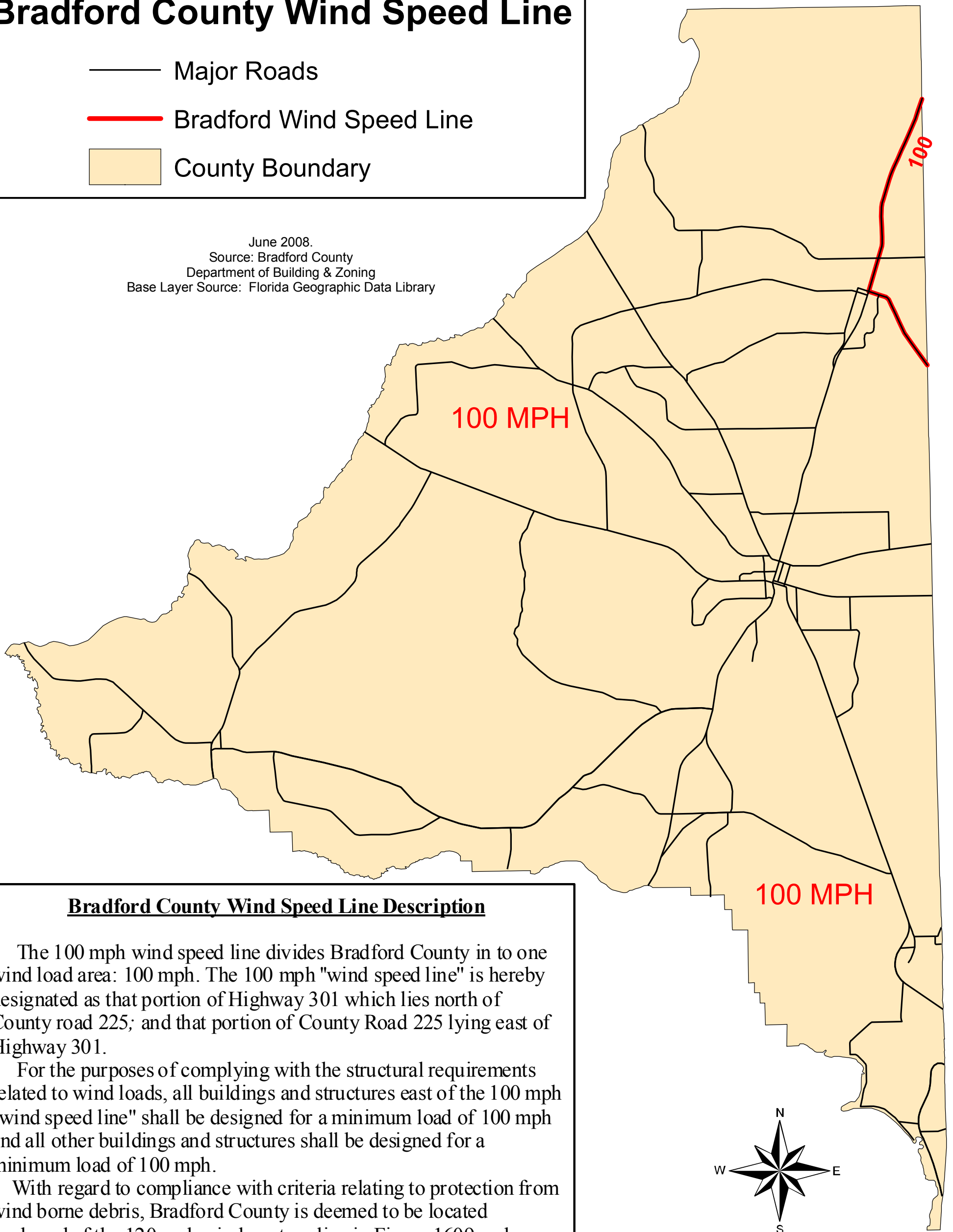


Bradford County Wind Speed Line

Bradford County Wind Speed Line

- Major Roads
- Bradford Wind Speed Line
- County Boundary

June 2008.
Source: Bradford County
Department of Building & Zoning
Base Layer Source: Florida Geographic Data Library



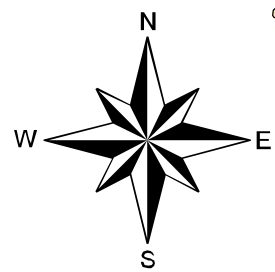
Bradford County Wind Speed Line Description

The 100 mph wind speed line divides Bradford County in to one wind load area: 100 mph. The 100 mph "wind speed line" is hereby designated as that portion of Highway 301 which lies north of County road 225; and that portion of County Road 225 lying east of Highway 301.

For the purposes of complying with the structural requirements related to wind loads, all buildings and structures east of the 100 mph "wind speed line" shall be designed for a minimum load of 100 mph and all other buildings and structures shall be designed for a minimum load of 100 mph.

With regard to compliance with criteria relating to protection from wind borne debris, Bradford County is deemed to be located landward of the 120 mph wind contour line in Figure 1609 and therefore, buildings within Bradford County are not required to have openings protected from wind borne debris except for critical facilities which voluntarily provide protection of openings from wind borne debris.

Source: Bradford County Ordinance No. 07-47, Adopted October 18, 2007



Prepared by the GeoPlan Center, University of Florida
for the Florida Department of Community Affairs,
Codes and Standards Division.

